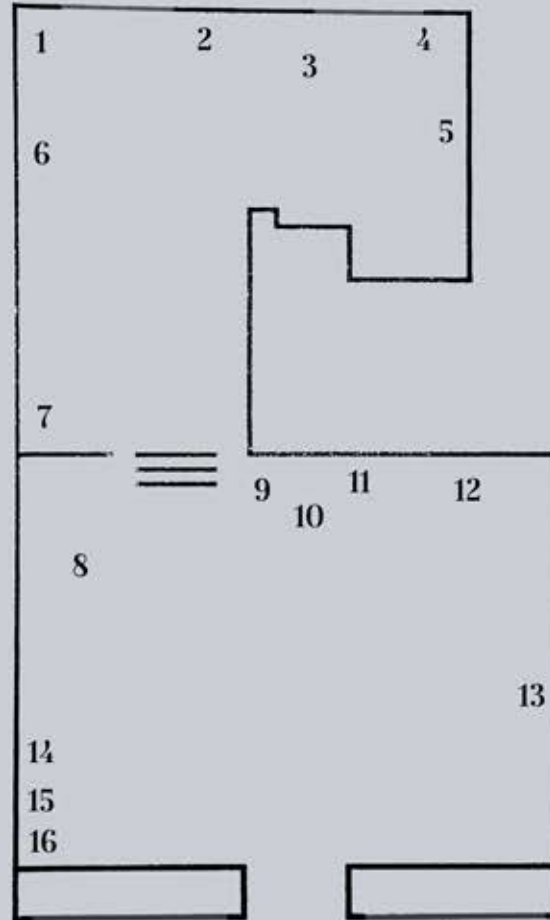


THE WORLD



¹ *as the sweetapple reddens on a high branch
high on the highest branch and the apppickers forgot—
no, not forgot: were unable to reach*
Sappho, trans. Anne Carson

² the hand of Sylvia Plath, 1953 & apple

³ Sternentänzer (*Rhynchospora colorata*)

⁴ *The Mind should have a fixed Eye
On Objects, that are plac'd on High.*
secret love (*Impatiens Velvetea*)

⁵ Emily Dickinson's herbarium

⁶ fragment of st. Lucy, Francesco del Cossa, c. 1473

⁷ clover (*Trifolium*)

⁸ rabbit foot fern (*Davallia fejeensis*) & amulet

⁹ crocodile butterfly
(*Fulgora laternaria*)

¹⁰ *Begonia Rex* & sea snail

¹¹ mandrake (*Mandragora autumnalis*)

¹² Death's flag

¹³ *sympathy of the spheres*
phtograph, hen, ostrich and quail eggs & pearls

¹⁴ desert rose: crystal & plant (*Adenium Obesum*)

¹⁵ *Begonia Maculata*
& hoja de sangre (*Hypoestes phyllostachya*)

¹⁶ chloris becoming flora
fragment of *Allegoria della primavera*,
Sandro Botticelli, c. 1482

